

CONSTRUCTION

New	Existing	
		OH 1Ph Primary
		OH 2Ph Primary
		OH 3Ph Primary
		OH 1Ph Secondary
		OH 3Ph Secondary
		UG 1Ph Primary
		UG 2Ph Primary
		UG 3Ph Primary
		UG 1Ph Secondary
		UG 3Ph Secondary
		Fiber Optic
		Counterpoise
		Conduit
		J Box
		Switchgear
		VFI
		Fiber Handhole
		Sec. Pedestal
		1Ph Pad Mount XFMR
		3Ph Pad Mount XFMR
		1Ph Pole Mount XFMR
		2Ph Pole Mount XFMR
		3Ph Pole Mount XFMR
		Distribution Pole
		Transmission Pole
		Fuse
		FCI
		Normal Closed
		Normal Open
		Service Point
		Easement
		Brush Clearing



ENGINEERS & CONSULTANTS

2424 Rimrock Rd., Suite 300
Madison, WI 53713

Tel: 866.825.8895 www.powersystem.org

DSG NR: CS, MR DWN BY: CS, MR

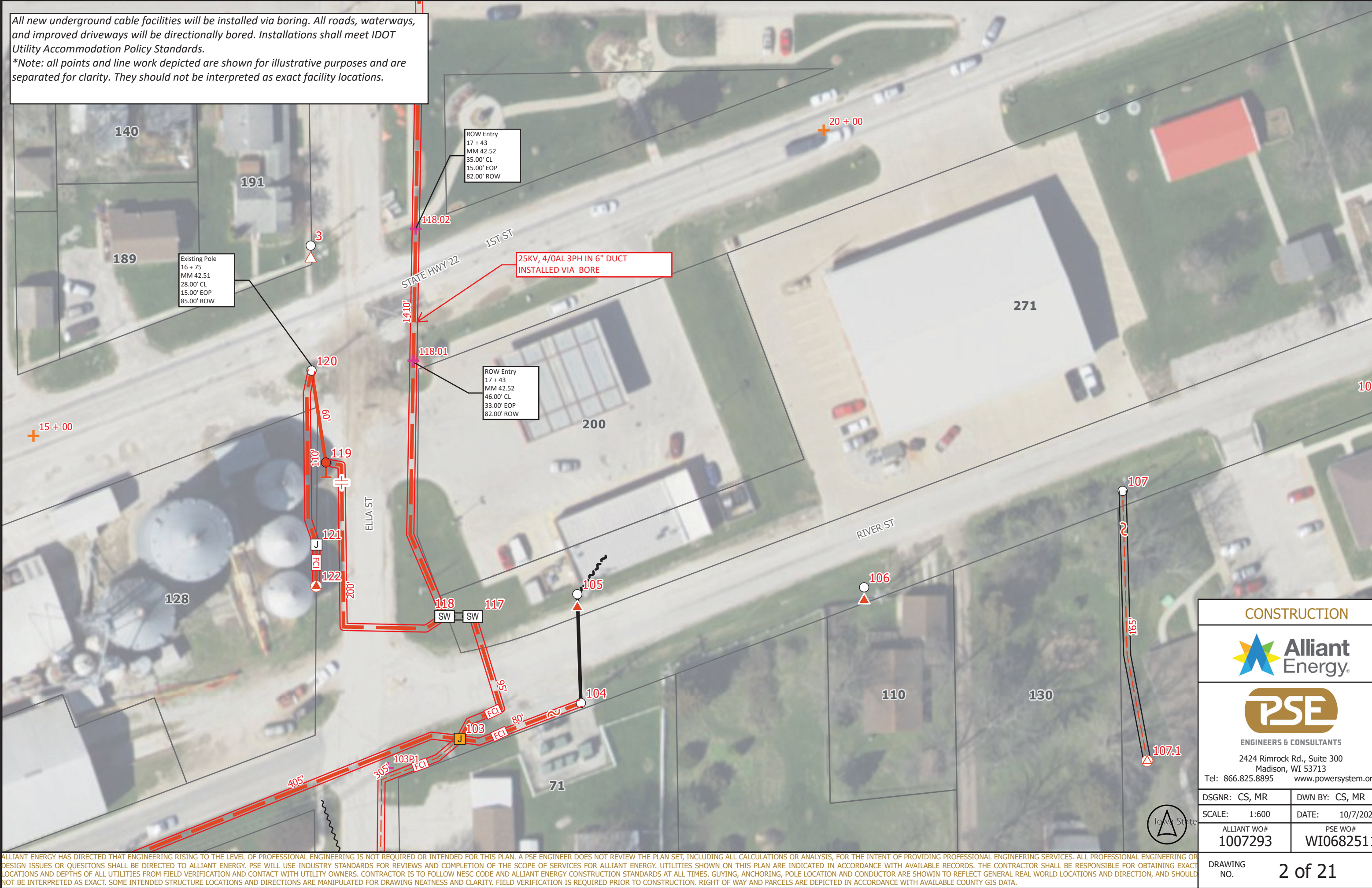
SCALE: 1:8,500 DATE: 10/7/2025

PROJECT NAME

Riverside 12.5kV to
24.9kV Conversion

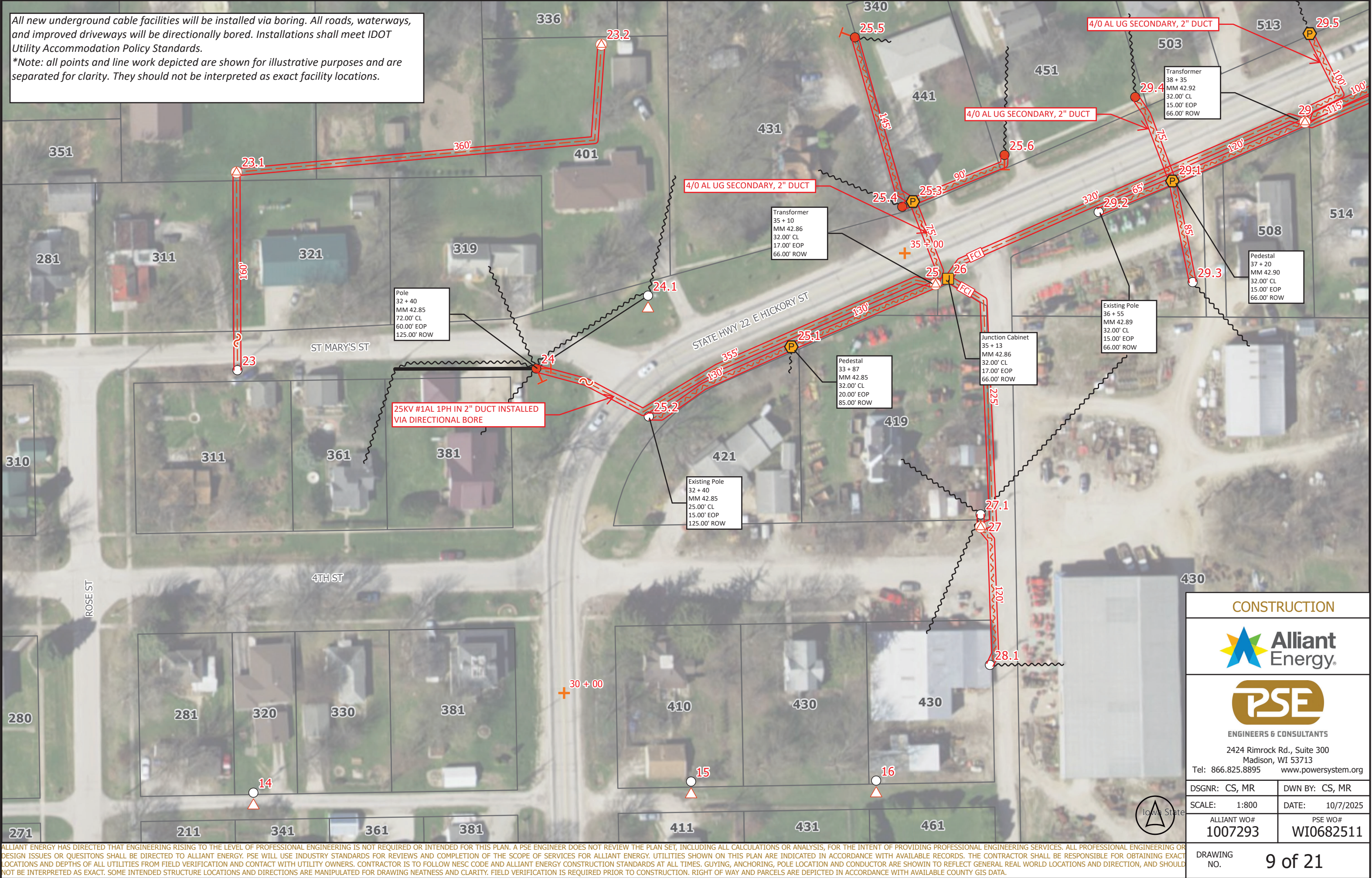
ALLIANT WO#
1007293

PSE WO#
WI0682511



CONSTRUCTION	
ENGINEERS & CONSULTANTS	
2424 Rimrock Rd., Suite 300 Madison, WI 53713 Tel: 866.825.8895 www.powersystem.org	
DSG NR: CS, MR	DWN BY: CS, MR
SCALE: 1:600	DATE: 10/7/2025
ALLIANT WO# 1007293	PSE WO# WI0682511

ALLIANT ENERGY HAS DIRECTED THAT ENGINEERING RISING TO THE LEVEL OF PROFESSIONAL ENGINEERING IS NOT REQUIRED OR INTENDED FOR THIS PLAN. A PSE ENGINEER DOES NOT REVIEW THE PLAN SET, INCLUDING ALL CALCULATIONS OR ANALYSIS, FOR THE INTENT OF PROVIDING PROFESSIONAL ENGINEERING SERVICES. ALL PROFESSIONAL ENGINEERING OR DESIGN ISSUES OR QUESTIONS SHALL BE DIRECTED TO ALLIANT ENERGY. PSE WILL USE INDUSTRY STANDARDS FOR REVIEWS AND COMPLETION OF THE SCOPE OF SERVICES FOR ALLIANT ENERGY. UTILITIES SHOWN ON THIS PLAN ARE INDICATED IN ACCORDANCE WITH AVAILABLE RECORDS. THE CONTRACTOR SHALL BE RESPONSIBLE FOR OBTAINING EXACT LOCATIONS AND DEPTHS OF ALL UTILITIES FROM FIELD VERIFICATION AND CONTACT WITH UTILITY OWNERS. CONTRACTOR IS TO FOLLOW NESC CODE AND ALLIANT ENERGY CONSTRUCTION STANDARDS AT ALL TIMES. GUYING, ANCHORING, POLE LOCATION AND CONDUCTOR ARE SHOWN TO REFLECT GENERAL REAL WORLD LOCATIONS AND DIRECTION, AND SHOULD NOT BE INTERPRETED AS EXACT. SOME INTENDED STRUCTURE LOCATIONS AND DIRECTIONS ARE MANIPULATED FOR DRAWING NEATNESS AND CLARITY. FIELD VERIFICATION IS REQUIRED PRIOR TO CONSTRUCTION. RIGHT OF WAY AND PARCELS ARE DEPICTED IN ACCORDANCE WITH AVAILABLE COUNTY GIS DATA.

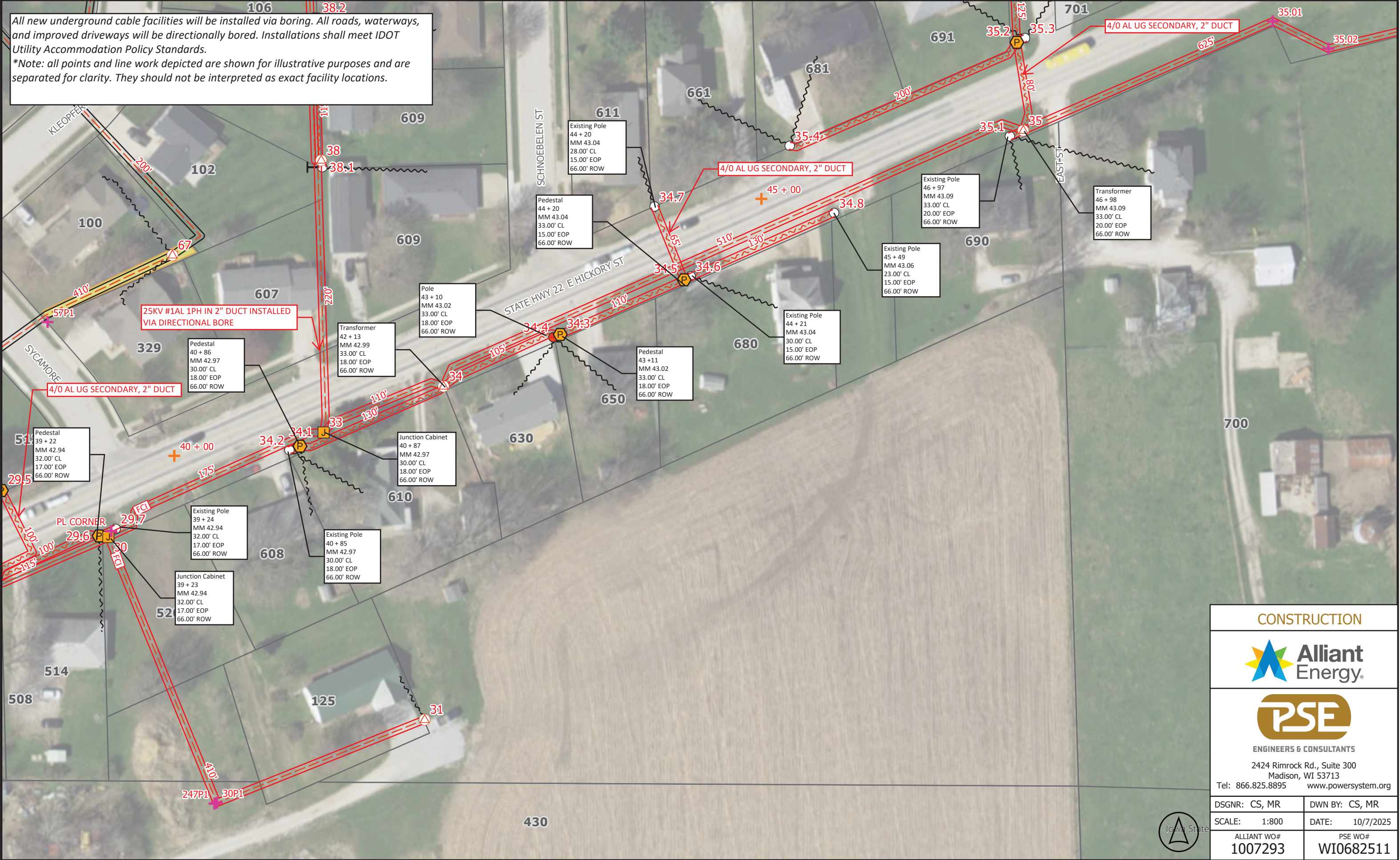


ALLIANT ENERGY HAS DIRECTED THAT ENGINEERING RISING TO THE LEVEL OF PROFESSIONAL ENGINEERING IS NOT REQUIRED OR INTENDED FOR THIS PLAN. A PSE ENGINEER DOES NOT REVIEW THE PLAN SET, INCLUDING ALL CALCULATIONS OR ANALYSIS, FOR THE INTENT OF PROVIDING PROFESSIONAL ENGINEERING SERVICES. ALL PROFESSIONAL ENGINEERING OR DESIGN ISSUES OR QUESTIONS SHALL BE DIRECTED TO ALLIANT ENERGY. PSE WILL USE INDUSTRY STANDARDS FOR REVIEWS AND COMPLETION OF THE SCOPE OF SERVICES FOR ALLIANT ENERGY. UTILITIES SHOWN ON THIS PLAN ARE INDICATED IN ACCORDANCE WITH AVAILABLE RECORDS. THE CONTRACTOR SHALL BE RESPONSIBLE FOR OBTAINING EXACT LOCATIONS AND DEPTHS OF ALL UTILITIES FROM FIELD VERIFICATION AND CONTACT WITH UTILITY OWNERS. CONTRACTOR IS TO FOLLOW NESC CODE AND ALLIANT ENERGY CONSTRUCTION STANDARDS AT ALL TIMES. GUYING, ANCHORING, POLE LOCATION AND CONDUCTOR ARE SHOWN TO REFLECT GENERAL REAL WORLD LOCATIONS AND DIRECTION, AND SHOULD NOT BE INTERPRETED AS EXACT. SOME INTENDED STRUCTURE LOCATIONS AND DIRECTIONS ARE MANIPULATED FOR DRAWING NEATNESS AND CLARITY. FIELD VERIFICATION IS REQUIRED PRIOR TO CONSTRUCTION. RIGHT OF WAY AND PARCELS ARE DEPICTED IN ACCORDANCE WITH AVAILABLE COUNTY GIS DATA.

CONSTRUCTION	
ENGINEERS & CONSULTANTS	
2424 Rimrock Rd., Suite 300 Madison, WI 53713 Tel: 866.825.8895 www.powersystem.org	
DSG NR: CS, MR	DWN BY: CS, MR
SCALE: 1:800	DATE: 10/7/2025
ALLIANT WO# 1007293	PSE WO# WI0682511
DRAWING NO.	9 of 21

All new underground cable facilities will be installed via boring. All roads, waterways, and improved driveways will be directionally bored. Installations shall meet IDOT Utility Accommodation Policy Standards.

**Note: all points and line work depicted are shown for illustrative purposes and are separated for clarity. They should not be interpreted as exact facility locations.*



ALLIANT ENERGY HAS DIRECTED THAT ENGINEERING RISING TO THE LEVEL OF PROFESSIONAL ENGINEERING IS NOT REQUIRED OR INTENDED FOR THIS PLAN. A PSE ENGINEER DOES NOT REVIEW THE PLAN SET, INCLUDING ALL CALCULATIONS OR ANALYSIS, FOR THE INTENT OF PROVIDING PROFESSIONAL ENGINEERING SERVICES. ALL PROFESSIONAL ENGINEERING OR DESIGN ISSUES OR QUESTIONS SHALL BE DIRECTED TO ALLIANT ENERGY. PSE WILL USE INDUSTRY STANDARDS FOR REVIEWS AND COMPLETION OF THE SCOPE OF SERVICES FOR ALLIANT ENERGY. UTILITIES SHOWN ON THIS PLAN ARE INDICATED IN ACCORDANCE WITH AVAILABLE RECORDS. THE CONTRACTOR SHALL BE RESPONSIBLE FOR OBTAINING EXACT LOCATIONS AND DEPTHS OF ALL UTILITIES FROM FIELD VERIFICATION AND CONTACT WITH UTILITY OWNERS. CONTRACTOR IS TO FOLLOW NESC CODE AND ALLIANT ENERGY CONSTRUCTION STANDARDS AT ALL TIMES. GUYING, ANCHORING, POLE LOCATION AND CONDUCTOR ARE SHOWN TO REFLECT GENERAL REAL WORLD LOCATIONS AND DIRECTION, AND SHOULD NOT BE INTERPRETED AS EXACT. SOME INTENDED STRUCTURE LOCATIONS AND DIRECTIONS ARE MANIPULATED FOR DRAWING NEATNESS AND CLARITY. FIELD VERIFICATION IS REQUIRED PRIOR TO CONSTRUCTION. RIGHT OF WAY AND PARCELS ARE DEPICTED IN ACCORDANCE WITH AVAILABLE COUNTY GIS DATA.

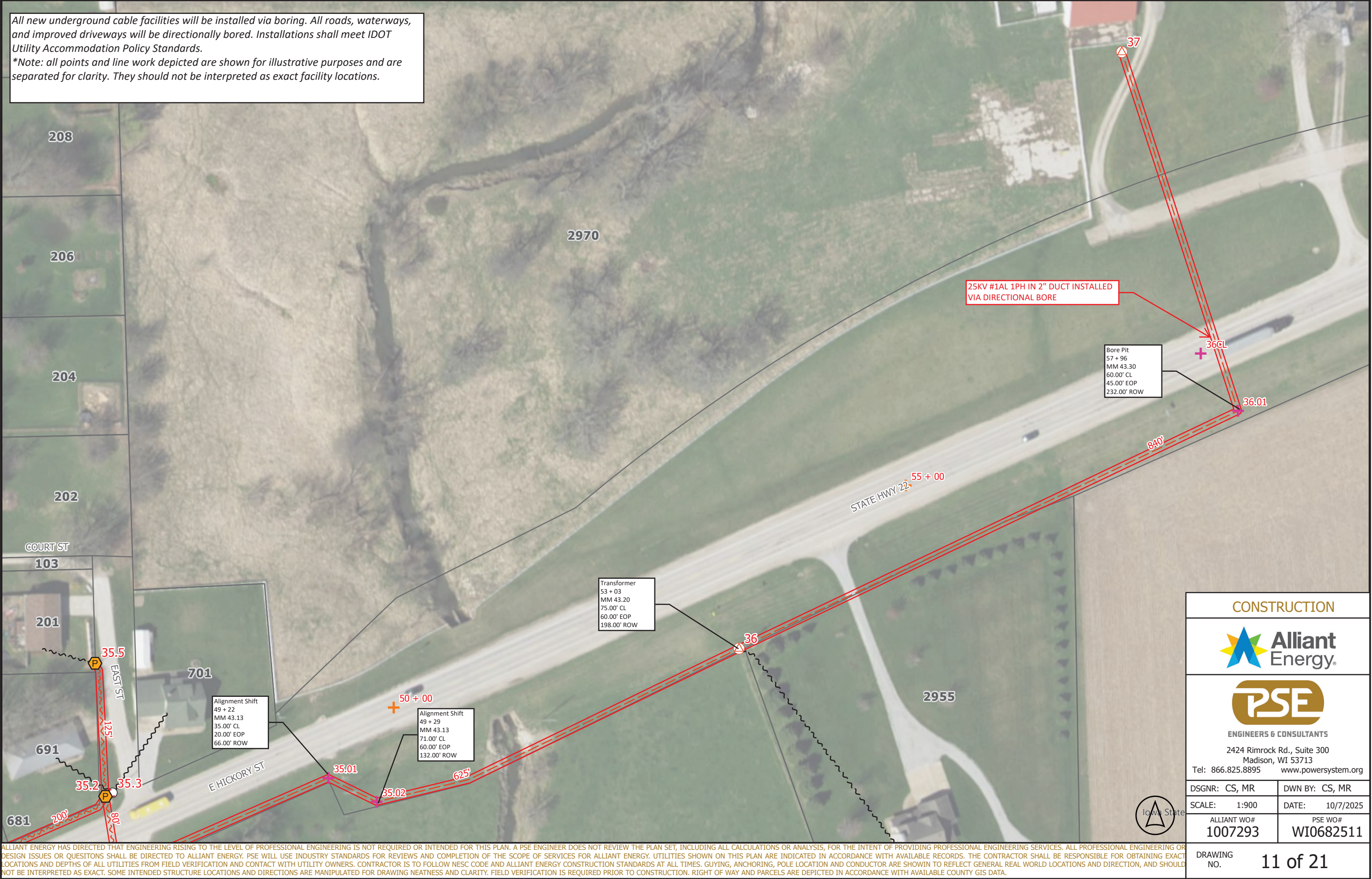
CONSTRUCTION

ENGINEERS & CONSULTANTS

2424 Rimrock Rd., Suite 300
Madison, WI 53713
Tel: 866.825.8895 www.powersystem.org

DSG NR: CS, MR	DWN BY: CS, MR
SCALE: 1:800	DATE: 10/7/2025
ALLIANT WO# 1007293	PSE WO# WI0682511

All new underground cable facilities will be installed via boring. All roads, waterways, and improved driveways will be directionally bored. Installations shall meet IDOT Utility Accommodation Policy Standards.
*Note: all points and line work depicted are shown for illustrative purposes and are separated for clarity. They should not be interpreted as exact facility locations.



CONSTRUCTION	
ENGINEERS & CONSULTANTS	
2424 Rimrock Rd., Suite 300 Madison, WI 53713 Tel: 866.825.8895 www.powersystem.org	
DSG NR: CS, MR	DWN BY: CS, MR
SCALE: 1:900	DATE: 10/7/2025
ALLIANT WO# 1007293	PSE WO# WI0682511
DRAWING NO.	11 of 21

ALLIANT ENERGY HAS DIRECTED THAT ENGINEERING RISING TO THE LEVEL OF PROFESSIONAL ENGINEERING IS NOT REQUIRED OR INTENDED FOR THIS PLAN. A PSE ENGINEER DOES NOT REVIEW THE PLAN SET, INCLUDING ALL CALCULATIONS OR ANALYSIS, FOR THE INTENT OF PROVIDING PROFESSIONAL ENGINEERING SERVICES. ALL PROFESSIONAL ENGINEERING OR DESIGN ISSUES OR QUESTIONS SHALL BE DIRECTED TO ALLIANT ENERGY. PSE WILL USE INDUSTRY STANDARDS FOR REVIEWS AND COMPLETION OF THE SCOPE OF SERVICES FOR ALLIANT ENERGY. UTILITIES SHOWN ON THIS PLAN ARE INDICATED IN ACCORDANCE WITH AVAILABLE RECORDS. THE CONTRACTOR SHALL BE RESPONSIBLE FOR OBTAINING EXACT LOCATIONS AND DEPTHS OF ALL UTILITIES FROM FIELD VERIFICATION AND CONTACT WITH UTILITY OWNERS. CONTRACTOR IS TO FOLLOW NESC CODE AND ALLIANT ENERGY CONSTRUCTION STANDARDS AT ALL TIMES. GUYING, ANCHORING, POLE LOCATION AND CONDUCTOR ARE SHOWN TO REFLECT GENERAL REAL WORLD LOCATIONS AND DIRECTION, AND SHOULD NOT BE INTERPRETED AS EXACT. SOME INTENDED STRUCTURE LOCATIONS AND DIRECTIONS ARE MANIPULATED FOR DRAWING NEATNESS AND CLARITY. FIELD VERIFICATION IS REQUIRED PRIOR TO CONSTRUCTION. RIGHT OF WAY AND PARCELS ARE DEPICTED IN ACCORDANCE WITH AVAILABLE COUNTY GIS DATA.