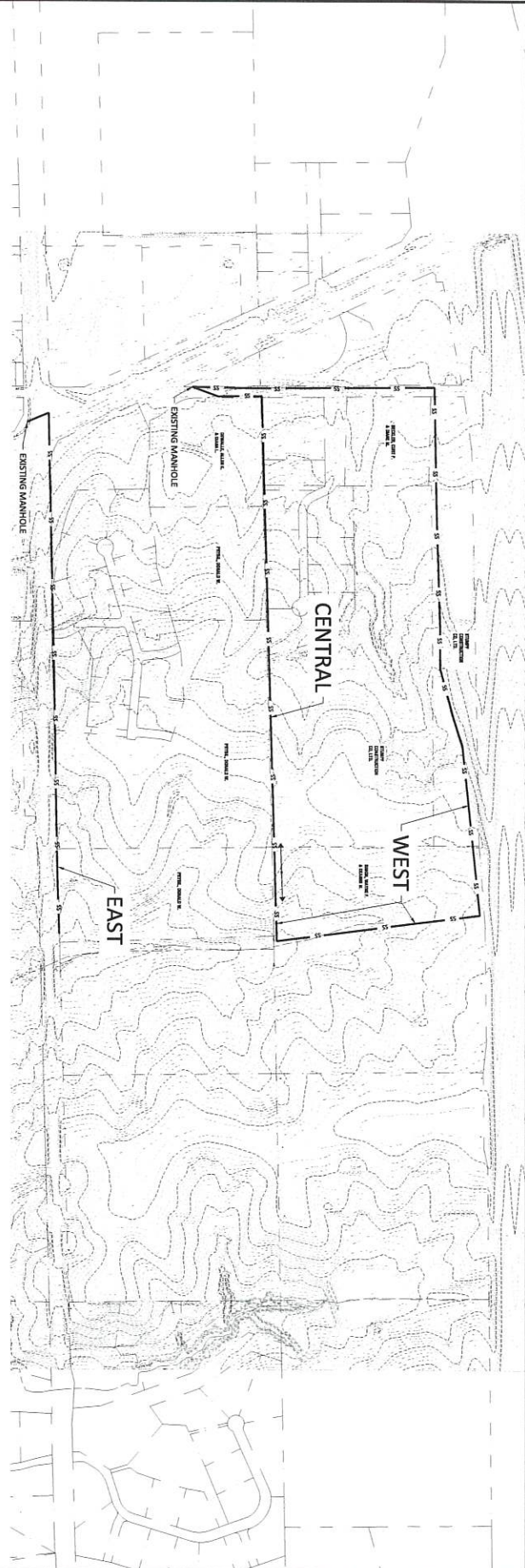
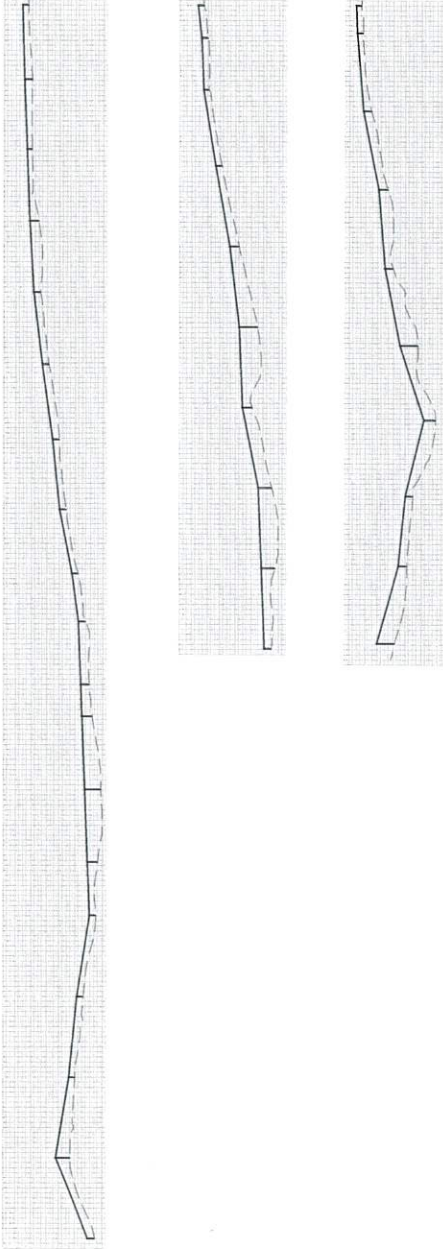


**CITY OF RIVERSIDE  
PLANNING AND ZONING COMMISSION MEETING  
RIVERBOAT ROOM-CITY HALL  
60 N GREENE ST**

**WEDNESDAY, February 1st, 2023 at 6:00 pm**

1. Call meeting to order
2. Roll Call
3. Approval of the agenda
4. Approval of 12-22-22, Minutes
5. Northeast Riverside – Sanitary Sewer Extension/Service
6. Planning & Zoning training – Brian Boelk, Axiom Consultants.
7. Adjourn

WEST CENTRAL EAST



NOT FOR CONSTRUCTION

SHEET NAME: <b>SANITARY SEWER CONCEPT</b>		PROJECT NAME: <b>COUNTY LINE ESTATES</b>		DRAWING LOG			ENGINEER:  WWW.AXIOM-CON.COM   (819) 519-6220
PROJECT NO.: <b>210049</b>		CLIENT NAME: <b>RIVERSIDE</b>		REV	DESCRIPTION OF CHANGES		
DESIGN PROFESSIONAL: <b>BOELK</b>		CLIENT NAME:		_____	_____	_____	_____

ENGINEER:

**AXIOM CONSULTANTS, INC.**  
60 E. Court Street  
Iowa City, IA 52240  
Project No.: 21-0156

Wednesday, January 11, 2023  
Engineer's Estimated  
Opinion of Costs

<b>NORTHEAST RIVERSIDE GROWTH - SANITARY SEWER EXTENSION/SERVICE</b>					
<b>NO.</b>	<b>ITEM</b>	<b>UNIT</b>	<b>QUANTITY</b>	<b>UNIT COST</b>	<b>ENGINEER'S ESTIMATE</b>
<b><u>EAST RUN</u></b>					
1	SANITARY SEWER GRAVITY MAIN, TRENCHED, PVC, 8 IN.	LF	3,170.0	\$56.00	\$177,520
2	SANITARY SEWER, FORCE MAIN, PVC	LF	1,100.0	\$45.00	\$49,500
3	MANHOLE, SANITARY SEWER, SW-301, 48 IN.	EACH	9.0	\$5,500.00	\$49,500
4	SANITARY LIFT STATION	EACH	1.0	\$300,000.00	\$300,000
				<b>Subtotal</b>	<b>\$576,520</b>
				10% Contingency	\$57,652
				<b>TOTAL</b>	<b>\$634,172</b>
<b><u>CENTRAL RUN</u></b>					
1	SANITARY SEWER GRAVITY MAIN, TRENCHED, PVC, 8 IN.	LF	3,196.0	\$56.00	\$178,976
2	MANHOLE, SANITARY SEWER, SW-301, 48 IN.	EACH	9.0	\$5,500.00	\$49,500
				<b>Subtotal</b>	<b>\$228,476</b>
				10% Contingency	\$22,848
				<b>TOTAL</b>	<b>\$251,324</b>
<b><u>WEST RUN</u></b>					
1	SANITARY SEWER GRAVITY MAIN, TRENCHED, PVC, 8 IN.	LF	6,125.0	\$56.00	\$343,000
2	SANITARY SEWER, FORCE MAIN, PVC	LF	1,200.0	\$45.00	\$54,000
3	MANHOLE, SANITARY SEWER, SW-301, 48 IN.	EACH	18.0	\$5,500.00	\$99,000
4	SANITARY LIFT STATION	EACH	1.0	\$300,000.00	\$300,000
				<b>Subtotal</b>	<b>\$796,000</b>
				10% Contingency	\$79,600
				<b>TOTAL</b>	<b>\$875,600</b>

**NOTES:**

1. THIS OPINION OF COSTS SIMPLY INCLUDES MATERIAL AND INSTALLATION ON ITEMS RELATED DIRECTLY TO THE SEWER INSTALLATION.
2. OPINION OF COSTS DOES NOT INCLUDE ANY COSTS ASSOCIATED WITH PROPERTY ACQUISITION OR EASEMENTS IF SO NEEDED.
3. OPINION OF COSTS DOES NOT INCLUDE REMOVALS OR RESTORATION DETERMINED TO BE NEEDED FOR SEWER INSTALLATION
4. SANITARY SEWER LIFT STATION ESTIMATE BASED ON AVERAGE CAPACITY AND WILL VARY PENDING FINAL SIZING.